



ATD-80051

120 LED CORDED UNDERHOOD LIGHT



OPERATING INSTRUCTIONS AND USER CAUTIONS

CAUTION: Before using this product, read this manual and follow all safety rules and operating instructions.

FEATURES:

- 120 SUPER BRIGHT LED'S FOR EXCELLENT AREA ILLUMINATION
- RATCHETING AND TELESCOPING BRACKETS ALLOW PERFECT POSITIONING OF LIGHT
- RATCHETING HOOD BRACKETS TELESCOPE FROM 47" TO 75"
- SOFT, FOAM COVERED ENDS ON TELESCOPING BRACKET ALLOW USE ON HOODS FROM 47" TO 75" WIDE
- 18/2 SJTOW 25' POWER CORD
- UL LISTED ADAPTOR

Instructions For Use

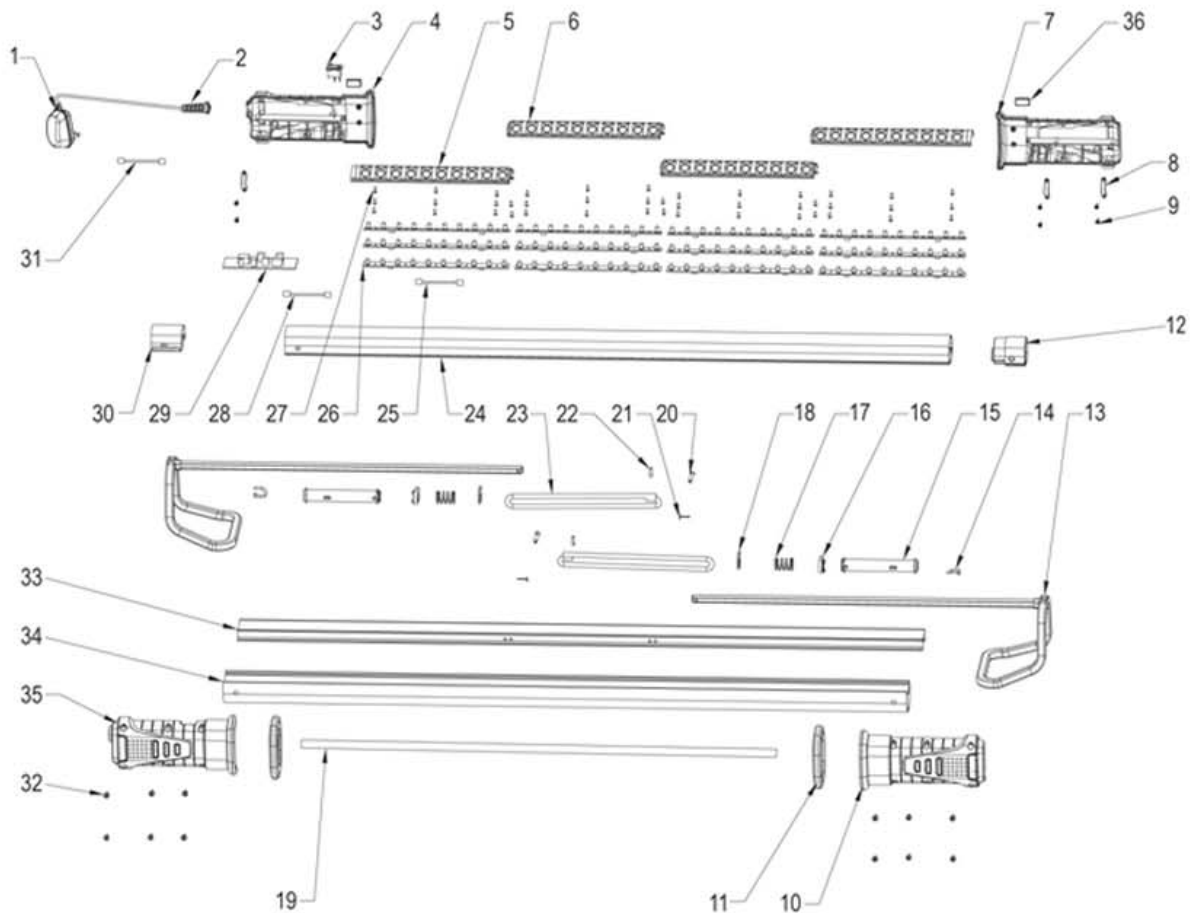
- **To use, plug the unit into any 110-120 VAC power source, such as a wall receptacle. Press the on/off switch (I) to turn unit on, press the other side of switch (0) to turn it off.**
- **The hooks can be adjusted by simply pulling out on them and affixing to whatever surface you like, such as a car hood. (Up to 75" wide)**
- **Once your light is in place, it can be rotated to the desired position by simply twisting the light. You will hear ratcheting "clicks" as you rotate it.**

Cautions

- **For indoor use only - don't use in or around, tubs, showers, sinks, pools, hot tubs, or in a wet environment**
- **Use only the recommended voltage and frequency requirements**
- **Do not move or turn off light by pulling the power cord**
- **Do not use if the cords or clear tube are damaged**
- **Keep out of reach of children**
- **Do not operate light with wet hands.**
- **Keep lamp away from hot objects.**



ATD-80051



ITEM#	ORDERING PART#	PART DESCRIPTION
1	PRT80051-01	ADAPTOR (WITH CORD)
2	PRT80051-02	CORD SHEATH
3	PRT80050-30	SWITCH
4	PRT80050-01-02	HANDLE SET, POWER CORD END
5	PRT80051-05	REFLECTOR LONG
6	PRT80051-06	REFLECTOR SHORT
7	PRT80050-03-04	HANDLE SET
8	PRT80050-07	FIXING RING
9	PRT80050-25	SCREW 2.5X10
10	PRT80050-03-04	HANDLE SET
11	PRT80050-11	PROTECTIVE COVER
12	PRT80051-12	LAMP HOLDER
13	PRT80050-15	PULL ROD
14	PRT80050-19	HOOK
15	PRT80050-05	SWIVEL SHAFT
16	PRT80050-06	POSITION BLOCK
17	PRT80050-16	PRESSURE SPRING
18	PRT80050-18	BLOCK

ITEM#	ORDERING PART#	PART DESCRIPTION
19	PRT80051-19	LABEL
20	PRT80050-26	ROLL PIN
21	PRT80050-27	COTTER PIN
22	PRT80050-22	TIE WIRE
23	PRT80050-17	ELASTIC BAND
24	PRT80051-24	DOWN PC TUBE
25	PRT80051-25	WIRE HARNESS ASSEMBLY
26	PRT80051-26	LED BOARD
27	PRT80051-27	SCREW 2.5X6
28	PRT80051-28	WIRE HARNESS ASSEMBLY
29	PRT80051-29	PCB
30	PRT80051-30	LAMP HOLDER, POWER CORD END
31	PRT80051-31	WIRE HARNESS ASSEMBLY
32	PRT80050-24	SCREW 3X14
33	PRT80050-14	INSERT
34	PRT80050-12	CLEAR TUBE
35	PRT80050-01-02	HANDLE SET, POWER CORD END
36	PRT80051-36	LABEL

